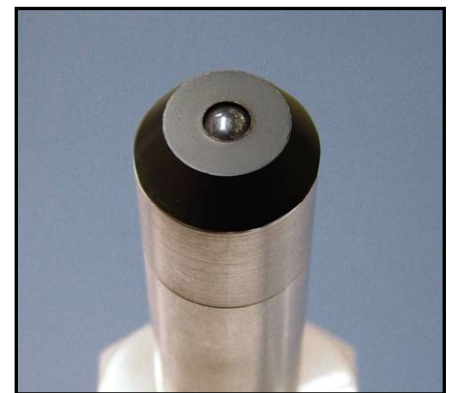


High Volume, Tip-Seal® Dispense Valve Assembly

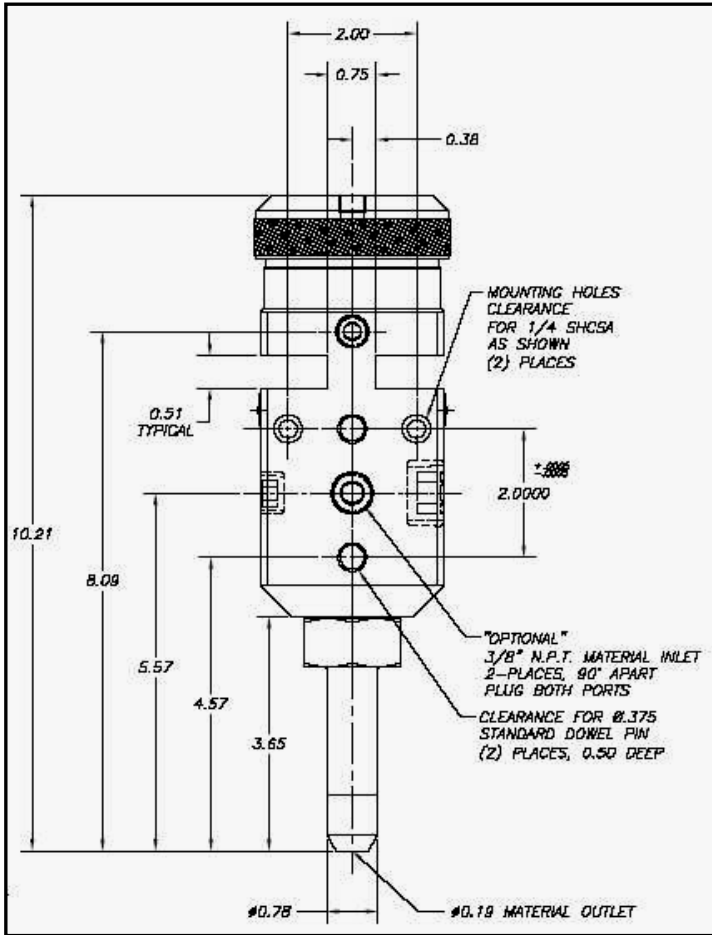


2600-035-001-AA

- ▶ Designed for use with high viscosity, one component adhesives or sealant
- ▶ High volume robotic applications
- ▶ Zero-Cavity - Shut off - seal at the tip
- ▶ Integrated nozzle and shut off
- ▶ Double air operated
- ▶ Ready fixture, includes mounting flats and set screw
- ▶ Stainless steel hardened nozzle seat
- ▶ Orifice: 0.19" & 0.35"
- ▶ Carbide ball tipped needle
- ▶ Dual sized, twin inlet ports



# 2600-035 Series Tip-Seal Dispense Valve Assembly



2600-035-001-AA Dimensions

## Specifications

**Air To Open:** 1/8" N.P.T.F.

**Air To Close:** 1/4" N.P.T.F.

**Weight:** 5.44 lbs. (Dry)

**Inlet:** (2) 3/8" Ports (One Plugged) & (2) 3/4" Ports (One Plugged)

**Tip Seal Orifice:** 0.180 (4.57 mm)

**Max. Working Pressure:** 4,000 P.S.I.; 276 Bar

**Min. Air Pressure:** 60 P.S.I.; 4.0 Bar

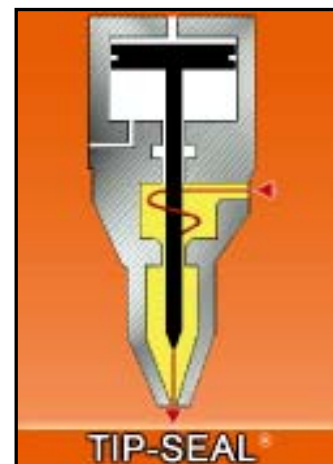
**Power Factor:** 25:1

**Required:** 4-way Pneumatic Valve

**Service Kit:** 2150-472 Series (Inc. Needle)

## Additional Models:

Model	Nozzle Length	Orifice	Features
2600-035-000-AA	2.87" (72.9mm)	0.190" (4.83mm)	(2) 1/2" NPT Mat'l Inlet Ports
2600-035-002-AA	2.87" (72.9mm)	0.350" (8.89mm)	Large Orifice



Form 2600-035-0804 Copyright 2008



Manufacturers of Precision Dispense Systems & Valves

45677 Helm Street • P.O. Box 701460

Plymouth, MI 48170 • USA

Phone: (734) 459-8600

Fax: (734) 459-8686

Web: [www.sealantequipment.com/valves](http://www.sealantequipment.com/valves)

Email: [valves@sealantequipment.com](mailto:valves@sealantequipment.com)